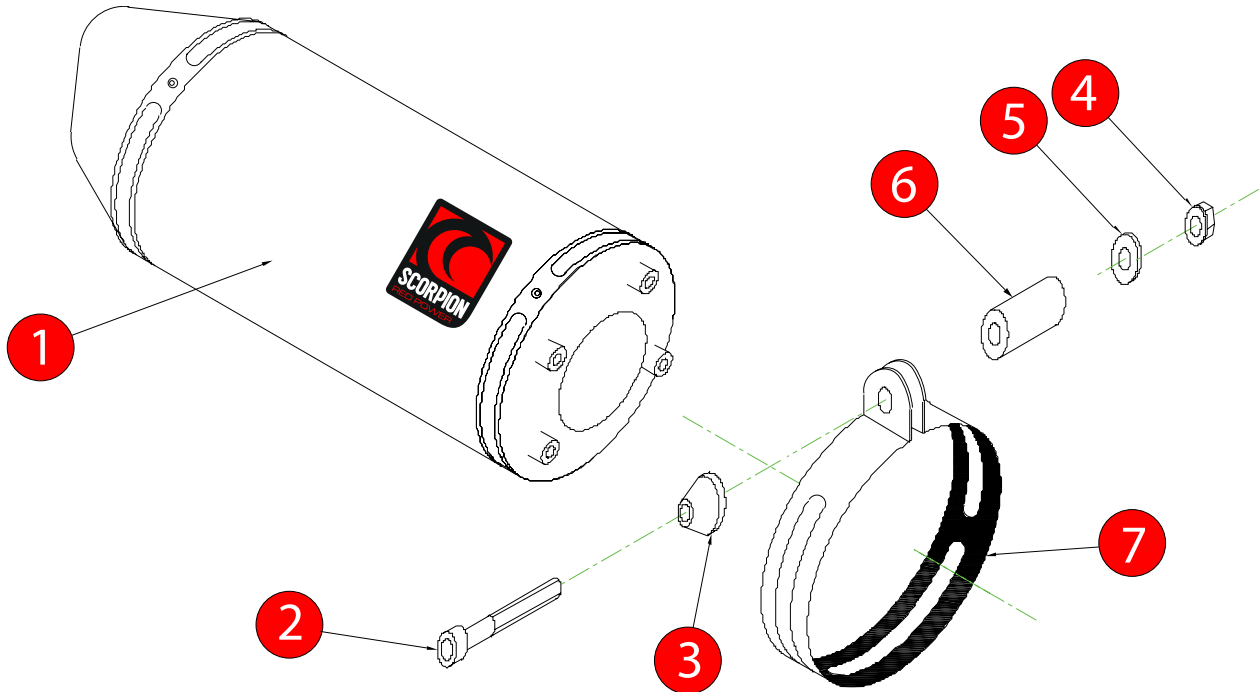


Box: PLOCK 1

BIKE	SUZUKI GSXR 1000 CARBINE	PART NO.	ESI - 92
YEAR	2001 - 2004	FIT KITS	OVAL Z039.11068
NOTES		FEATURES	DB KILLER Z038.10120



- 1 225mm Silencer (O-Z040.18H)
- 2 M8 x 50mm Cap Head Bolt (Z017.10078)
- 3 Aluminium Bolt Finisher (Z026.20068)
- 4 M8 Nyloc Nut (Z017.10802)
- 5 M8 Washer (Z017.10832)
- 6 15mm Aluminium Spacer (Z026.10005)
- 7 Composite Strap (Z038.10088)

E-MARK ROUND	
E-MARK OVAL	BSAU 193a 1990/t3
ISSUE NO.	5
DATE	18/12/08
AUTHORISED	S.Northrop
CHECKED	

NOTE: ENSURE SCORPION SYSTEM IS CLEAR OF MOVING PARTS AND ALL ORIGINAL FUNCTIONS WORK CORRECTLY.

- A) Remove original exhaust from bike, taking care to keep all original components in a safe place.
- B) Refit Scorpion exhaust as per line diagram above.
- C) When fitted take bike for a short ride to ensure all functions are correct.
- D) When bike & exhaust are cool enough check all nuts and bolts are still secure.